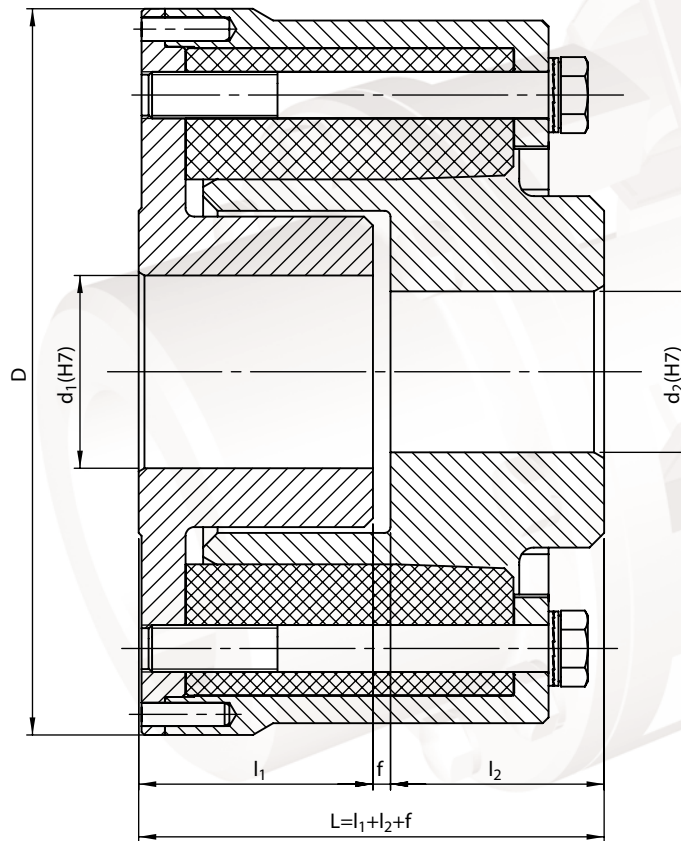


Example of designation of the FENEX type coupling with the nominal torque of $M_n=5000$ Nm, hub holes diameters of $d_1=60$ mm, $d_2=55$ mm, hub holes lengths of $l_1=85$ mm, $l_2=75$ mm, size of 250: (marking see page A4-1)

5000-60/85-55/75- 250 FENEX Flexible Coupling

- the version „Ex“ – 5000-60/85-55/75- 250 FENEX-**Ex** Flexible coupling
- with lead holes – 5000-**ow**/85-**ow**/75- 250 FENEX Flexible coupling



Nominal torque M_n Nm	d_1, d_2		$l_1, l_2^{1)}$		f	D	Max rotational speed n_{max} 1/min	Moment of inertia ²⁾ I kgm ²	Weight ²⁾ m kg	Coupling size and type
	initial	max.	nomin.	max.						
5000	8	75	85	75	6	248	2500	0,23	30,8	250 FENEX

We are also offering tailor-made special versions.

We produce splineways as recommended, normally acc. to PN-70/M-85005, with the Js9 tolerance.

1) On request, we produce couplings with hub lengths different than the nominal and extended lengths provided in the table.

2) The weight and the moment of inertia have been determined for the coupling with the maximum holes and nominal lengths of the hubs.