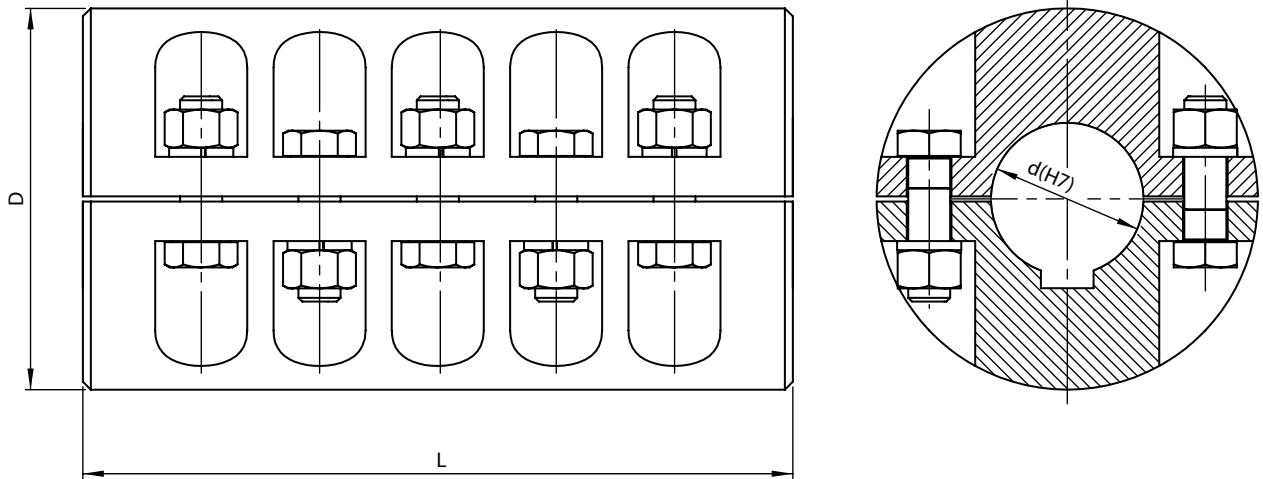


ASL CLAMP COUPLINGS

Example of designation of the ASL coupling, hub hole diameters of $d=45$ mm, size of 103: (marking see page A8-1)

45-103 ASL Clamp coupling

- On request of the coupling it is possible to produce a coupling with holes for joining the shafts of two different diameters.



Nominal torque M_n	d max	D	L	Max rotational speed n_{max}	Moment of inertia ¹⁾ I	Weight ¹⁾ m	Coupling size and type
Nm	mm			1/min	kgm ²	kg	-
75	25	90	116	400	0,003	3,9	101 ASL
105	30						
150	35	100	164		0,007	6,5	102 ASL
210	40						
300	45	125	164		0,013	8,2	103 ASL
420	55						
600	60	140	210		0,031	13,9	104 ASL
850	65						
1200	70	150	210		0,057	18,4	105 ASL
1600	75						
2400	80	165	260	0,099	26,2	106 ASL	
3400	90						
4800	100	210	330	0,28	49	108 ASL	
6500	110						
9500	125	270	330	0,68	76	110 ASL	
13000	140						
19000	160	340	480	2,93	188	112 ASL	
26000	180						
38000	200	420	560	9,48	362	114 ASL	

We are also offering tailor-made special versions.

We produce splineways as recommended, normally acc. to PN-70/M-85005, with the Js9 tolerance

1) The weight and the moment of inertia have been determined for the coupling with the maximum holes and nominal lengths of the hubs.