



### ASL Clamp Couplings

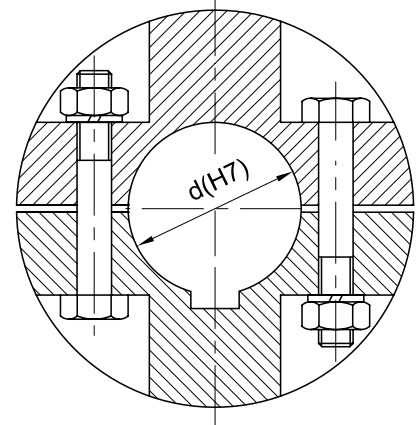
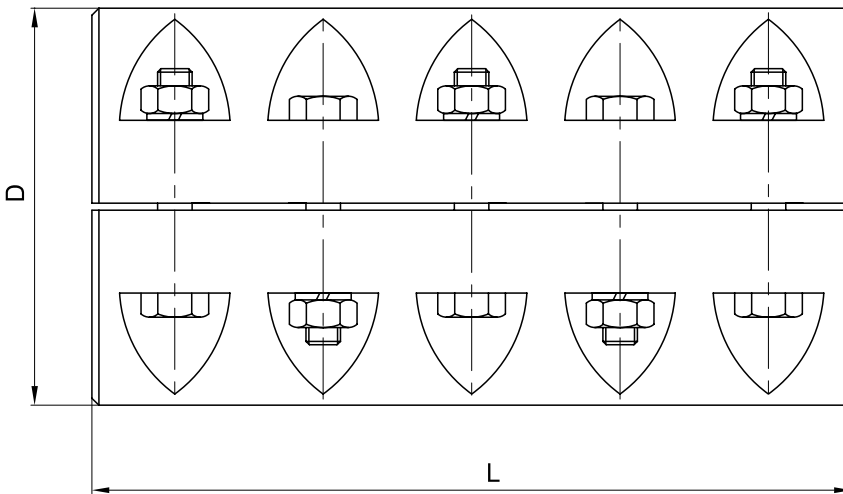
Example of designations ASL type couplings with the hole diameter of  $d=45$  mm and size of 103:

Prod. sheet No.

**45- 103 ASL Clamp Coupling**

**1 ASL**

06.2006



Nominal torque $M_n$	$d_{max}$	D	L	Max rotational speed $n_{max}$	Moment of inertia $I$	Weight $m$	Coupling size
Nm		mm		1/min	$kgm^2$	kg	-
75	25	90	116	400	0,003	3,9	101 ASL
105	30						
150	35						
210	40	100	164		0,007	6,5	102 ASL
300	45						
420	55	125	164		0,013	8,2	103 ASL
600	60						
850	65	140	210		0,031	13,9	104 ASL
1200	70						
1600	75	150	210		0,057	18,4	105 ASL
2400	80						
3400	90	190	260	350	0,099	26,2	106 ASL
4800	100	210	330		0,14	31,3	107 ASL
6500	110	230	330		0,28	49	108 ASL
9500	125	270	330		0,43	60	109 ASL
13000	140	300	400		0,68	76	110 ASL
19000	160	340	480		1,33	118	111 ASL
26000	180	380	480		2,93	188	112 ASL
38000	200	420	560		4,76	245	113 ASL
					9,48	362	114 ASL

We produce splineways as recommended, normally acc. to PN-70/M-85005, with the Js9 tolerance.

Material - steel, cast iron

**We are also offering tailor-made special versions.**